

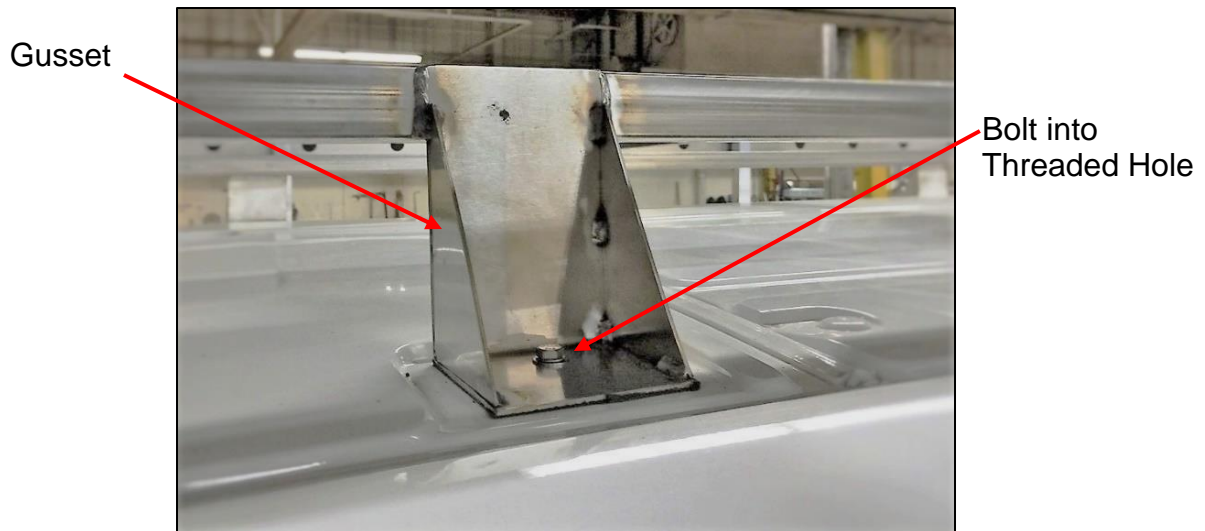
## 102-S Roof Rack Installation Instructions Ford Transit

### Hardware

- 6 – 8 Gussets (depending on van length)
- 6 – 8  $\frac{5}{16}$  x 1" Bolts, 8 Washers, 8 Lockwashers to Fasten Gussets to Roof
- 8  $\frac{3}{8}$  x 4" Bolts, Washers, Lockwashers
- 2 1- $\frac{1}{2}$ " Stainless Side Rail Tubes
- 3 – 4 1- $\frac{1}{2}$ " Stainless Crossbars
- 4 Tiedowns

1. Remove plastic caps in threaded holes on top of van. Drilling a small hole in center of cap will allow it to be taken out.
2. Place stainless steel gusset (See Photo A) onto recessed area on roof where plastic cap was originally located. Silicone around threaded hole and loosely screw bolt (provided) through gusset, into hole.

Photo A



3. Repeat Step 2 throughout driver and passenger side of van.

- Depending on the length of the van and roof rack, two stainless steel tubes may need to be bolted together on each side. A sleeve (provided), bolted to one of the tubes, will allow the two tubes to be easily bolted together. (See Photo B)

These pieces are the side rails of the roof rack and meant to be clamped to the gussets on the roof. (See Photo C)

Photo B

Sleeve

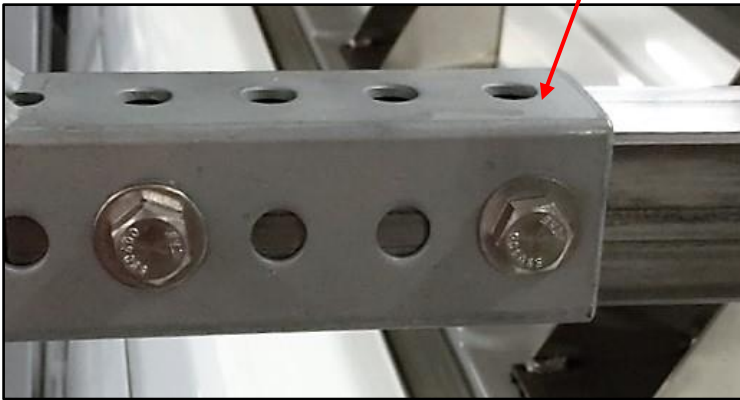
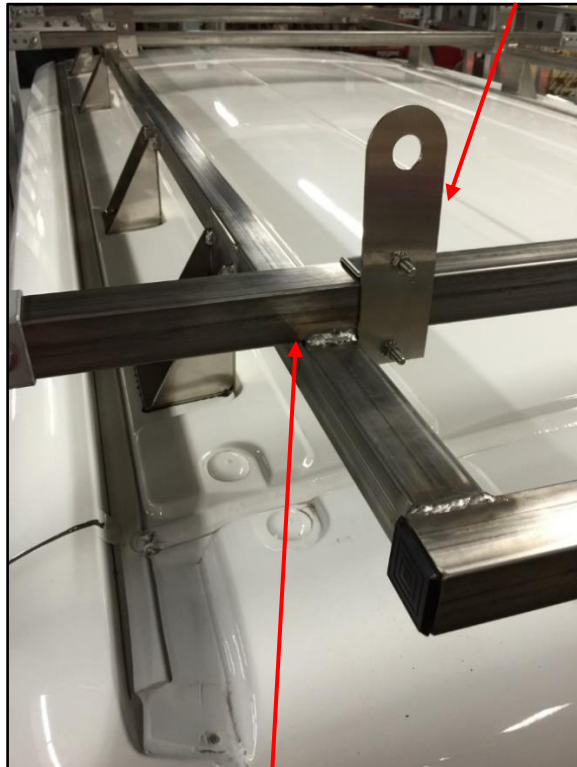


Photo C

Tie-Downs



Crossbar

- Using vice grips, clamp the long tubes to the gussets from the front of the van to the rear. At this point, the bolts can be tightened into the top of the van. Silicone around base of gussets.
- The long tubes can now be welded or bolted to the stainless gussets. After the tubes have been fastened to the gussets, the vice grips can be removed.
- The shorter tubes or crossbars can now be placed on top of and perpendicular to the longer side rail tubes. The shorter tubes can now be welded or bolted to the longer side rail tubes.
- Tie-downs (provided) can now be bolted into desired locations (See Photo C).